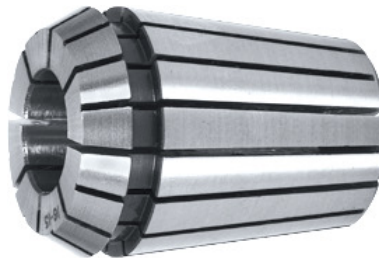


**ER collet, ER 40, Nominal clamping Ø d: 24mm****Order data**

Order number	309040 24
GTIN	4045197151865
Item class	32Z

Description**Version:**

Through hardened and ground. Polished.

Note:

The **collet clamping Ø range** is **always up to 1 mm less than nominal**, e.g. Ø 10 – 9 mm, **except for Ø 1, 1.5 and 2 (where it is only 0.5 mm)**.

Technical description

Nominal clamping Ø d	24 mm
Adapter	ER 40
Standard	ISO 15488-B
Concentricity	≤ 10 µm
Type	472 E
External Ø D	41 mm
Overall length L	46 mm
Type of product	Collet

