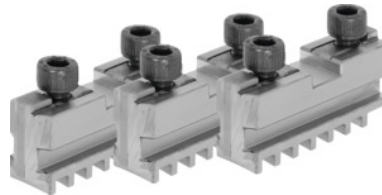




## Base jaw set, 3 pieces, hardened, for chuck type: 125mm



### Order data

|              |               |
|--------------|---------------|
| Order number | 314000 125    |
| GTIN         | 4019208034096 |
| Item class   | 33R           |

### Description

#### Application:

For fitting hardened reversible jaws or soft top jaws.

#### Suitable for:

**Three-jaw lathe chucks No. 310505; 310655; 310705.**

#### Note:

- Jaws can generally be renewed in the chuck as long as the guide in the body is not worn out.
- Top, turning, and drilling jaws bought subsequently must be ground in the chuck for radial and axial run-out.

### Technical description

|                                  |                                    |
|----------------------------------|------------------------------------|
| Length L                         | 55 mm                              |
| for chuck type                   | 125 mm                             |
| Slot width D +0.01               | 12.68 mm                           |
| Tenon width B <sub>1</sub> -0.05 | 7.94 mm                            |
| Thread                           | M8                                 |
| suitable for colour code         | Röhm geared scroll chucks and jaws |
| Type of product                  | Gear scroll chuck jaws             |

