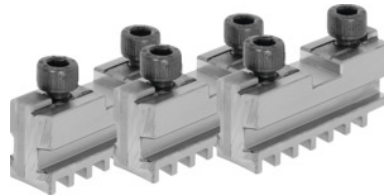




## Base jaw set, 3 pieces, hardened, for chuck type: 160mm



### Order data

Order number	314000 160
GTIN	4019208034119
Item class	33R

### Description

#### Application:

For fitting hardened reversible jaws or soft top jaws.

#### Suitable for:

Three-jaw lathe chucks No. 310505; 310655; 310705.

#### Note:

- Jaws can generally be renewed in the chuck as long as the guide in the body is not worn out.
- Top, turning, and drilling jaws bought subsequently must be ground in the chuck for radial and axial run-out.

### Technical description

Length L	65 mm
for chuck type	160 mm
Slot width D +0.01	12.68 mm
Tenon width B <sub>1</sub> -0.05	7.94 mm
Thread	M8
suitable for colour code	Röhm geared scroll chucks and jaws
Type of product	Gear scroll chuck jaws

