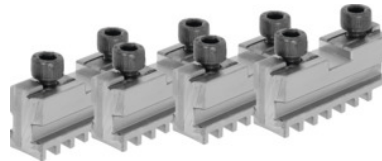




Base jaw set, 4 pieces, hardened, for chuck type: 315mm



Order data

Order number	314100 315
GTIN	4019208034270
Item class	33R

Description

Application:

For fitting hardened reversible jaws or soft top jaws.

Suitable for:

Four-jaw lathe chucks No. 312505; 312705.

Note:

- Jaws can generally be renewed in the chuck as long as the guide in the body is not worn out.
- Top, turning, and drilling jaws bought subsequently must be ground in the chuck for radial and axial run-out.

Technical description

for chuck type	315 mm
Length L	108 mm
Slot width D +0.01	19.03 mm
Tenon width B ₁ -0.05	12.7 mm
Thread	M12
suitable for colour code	Röhm geared scroll chucks and jaws
Type of product	Gear scroll chuck jaws

