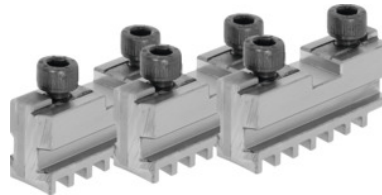


**Base jaw set, 3 pieces, hardened, for chuck type: 200mm****Order data**

Order number	314000 200
GTIN	4019208034126
Item class	33R

Description**Application:**

For fitting hardened reversible jaws or soft top jaws.

Suitable for:

Three-jaw lathe chucks No. 310505; 310655; 310705.

Note:

- **Jaws can generally be renewed in the chuck as long as the guide in the body is not worn out.**
- **Top, turning, and drilling jaws bought subsequently must be ground in the chuck for radial and axial run-out.**

Technical description

for chuck type	200 mm
Length L	78 mm
Slot width D +0.01	12.68 mm
Tenon width B ₁ -0.05	7.94 mm
Thread	M8
suitable for colour code	Röhm geared scroll chucks and jaws
Type of product	Gear scroll chuck jaws

