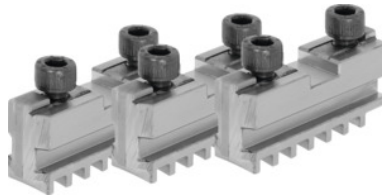




## Base jaw set, 3 pieces, hardened, for chuck type: 350mm



### Order data

Order number	314000 350
GTIN	4019208034157
Item class	33R

### Description

#### Application:

For fitting hardened reversible jaws or soft top jaws.

#### Suitable for:

**Three-jaw lathe chucks No. 310505; 310655; 310705.**

#### Note:

- **Jaws can generally be renewed in the chuck as long as the guide in the body is not worn out.**
- **Top, turning, and drilling jaws bought subsequently must be ground in the chuck for radial and axial run-out.**

### Technical description

also suitable for chuck type	400 mm
for chuck type	350 mm
Length L	127 mm
Slot width D +0.01	19.03 mm
Tenon width B <sub>1</sub> -0.05	12.7 mm
Thread	M16
suitable for colour code	Röhm geared scroll chucks and jaws
Type of product	Gear scroll chuck jaws

