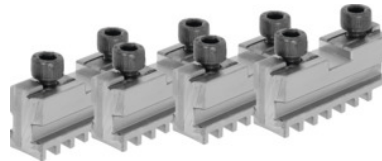


**Base jaw set, 4 pieces, hardened, for chuck type: 160mm****Order data**

Order number	314100 160
GTIN	4019208034249
Item class	33R

**Description****Application:**

For fitting hardened reversible jaws or soft top jaws.

**Suitable for:**

**Four-jaw lathe chucks No. 312505; 312705.**

**Note:**

- **Jaws can generally be renewed in the chuck as long as the guide in the body is not worn out.**
- **Top, turning, and drilling jaws bought subsequently must be ground in the chuck for radial and axial run-out.**

**Technical description**

Length L	65 mm
for chuck type	160 mm
Slot width D +0.01	12.68 mm
Tenon width B <sub>1</sub> -0.05	7.94 mm
Thread	M8
suitable for colour code	Röhm geared scroll chucks and jaws
Type of product	Gear scroll chuck jaws

