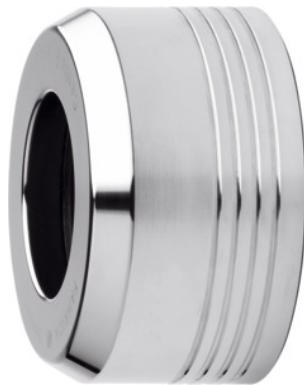




ER clamping nut CENTRO P Standard, Type CP for ER: 16



Order data

Order number	309655 16
GTIN	2050001704856
Item class	34F

Description

Version:

Mini = all sizes with "M", extremely slim design.

MiniSlim = sizes with "MS", extremely super slim design.

Conical = all sizes with "C".

Standard = all other sizes.

With trapezoidal thread for high clamping forces. Extra long double guidance of the ER clamping nut. ER clamping nuts coated for reduction of **friction**.

ER clamping nut CP, **not suitable for HP sealing rings**.

Suitable for:

FAHRION ER collet chuck CENTRO P.

Optional extras:

Sealing rings No. 309666 – 309668. Clamping wrenches No. 309754 – 309756. HP collets No. 309349 – 309359.

Note:

FAHRION system ER clamping nuts type CP and sealing rings type HP **do not fit on to other systems!**

Only the nominal size can be clamped (no intermediate range!)

Clamping range: 1 - 10 mm

Overall length L: 23.4 mm

External Ø D: 30 mm

maximum tightening torque: 55 N·m
Thread: Tr22×1.5

Technical description

Overall length L	23.4 mm
Clamping range	1 - 10 mm
maximum tightening torque	55 N·m
External Ø D	30 mm
Series	Centro P
Thread	Tr22×1.5
Type of product	Clamping nut

Accessories

CP roller bearing wrench for torque wrenches Type 16	309756 16
CP roller bearing wrench Type 16	309754 16