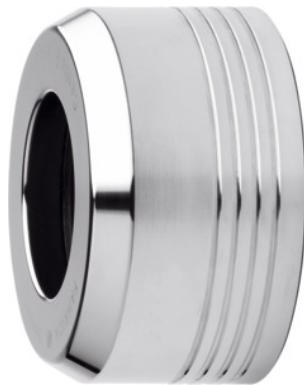




ER clamping nut CENTRO P Standard, Type CP for ER: 25



Order data

Order number	309655 25
GTIN	2050001704863
Item class	34F

Description

Version:

Mini = all sizes with "M", extremely slim design.

MiniSlim = sizes with "MS", extremely super slim design.

Taper = all sizes with "C".

Standard = all other sizes.

With trapezoidal thread for high clamping forces. Extra long double guidance of the ER clamping nut. ER clamping nuts coated for reduction of **friction**.

ER clamping nut CP, **not suitable for HP sealing rings**.

Suitable for:

FAHRION ER collet chuck CENTRO P and FAHRION ER collet chuck HDC.

Optional extras:

Sealing rings No. 309666 – 309668, precision ER collets No. 308878 - 308992, clamping wrenches No. 309754 – 309756, HP collets No. 309365 - 309379.

Note:

FAHRION system ER clamping nuts type CP and sealing rings type HP **do not fit on to other systems!**

FAHRION ER clamping nut CENTRO P HDC not suitable for standard ER collet chucks CENTRO P. Only the nominal size can be clamped (no intermediate range!)

Technical description

Clamping range	2 - 16 mm
Overall length L	25.6 mm
maximum tightening torque	90 Nm
External Ø D	40 mm
Series	Centro P
Thread	Tr32×1.5
Type of product	Clamping nut

Accessories

CP roller bearing wrench for torque wrenches Type 25	309756 25
CP roller bearing wrench Type 25	309754 25