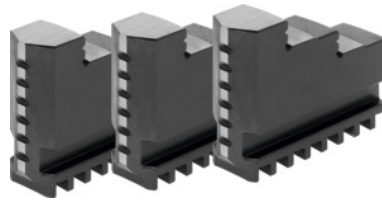




Inside jaw set, 3 pieces, hardened, for chuck type: 80



Order data

Order number	315000 80
GTIN	4019208038728
Item class	33R

Description

Suitable for:

Three-jaw lathe chucks No. 310505; 310655; 310705.

Note:

- Jaws can generally be renewed in the chuck as long as the guide in the body is not worn out.
- Top, turning, and drilling jaws bought subsequently must be ground in the chuck for radial and axial run-out.

Clamping face smooth, not serrated.

Technical description

Length L	37 mm
for chuck type	80 mm
Width B	12 mm
Height H	26 mm
suitable for colour code	Röhm geared scroll chucks and jaws
Type of product	Gear scroll chuck jaws

