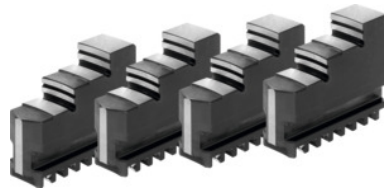




Outside jaw set, 4 pieces, hardened, for chuck type: 250



Order data

Order number	315300 250
GTIN	4019208038612
Item class	33R

Description

Suitable for :

Four-jaw lathe chucks No. 312000; 312500; 312700.

Note:

- Jaws can generally be renewed in the chuck as long as the guide in the body is not worn out.
- Top, turning, and drilling jaws bought subsequently must be ground in the chuck for radial and axial run-out.

suitable for colour code: RöhM geared scroll chucks and jaws

Length L: 90 mm

Width B: 24 mm

Height H: 67.5 mm

Technical description

Length L	90 mm
for chuck type	250 mm
Height H	67.5 mm
Width B	24 mm
suitable for colour code	RöhM geared scroll chucks and jaws
Type of product	Gear scroll chuck jaws

