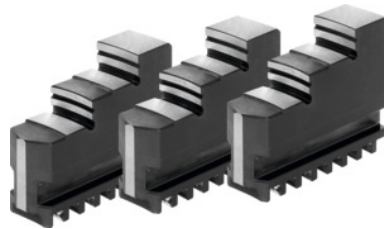




Outside jaw set, 3 pieces, hardened, for chuck type: 100



Order data

Order number	315200 100
GTIN	4019208038834
Item class	33R

Description

Suitable for :

Three-jaw lathe chucks No. 310100; 310500; 310600; 310650; 310670; 310700; 310750.

Note:

- Jaws can generally be renewed in the chuck as long as the guide in the body is not worn out.
- Top, turning, and drilling jaws bought subsequently must be ground in the chuck for radial and axial run-out.

suitable for colour code: Röhm geared scroll chucks and jaws

Length L: 48 mm

Width B: 14 mm

Height H: 33.5 mm

Technical description

Height H	33.5 mm
Length L	48 mm
Width B	14 mm
for chuck type	100 mm
suitable for colour code	Röhm geared scroll chucks and jaws
Type of product	Gear scroll chuck jaws

