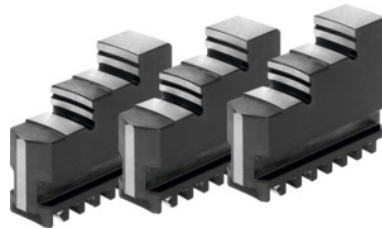




Outside jaw set, 3 pieces, hardened, for chuck type: 160



Order data

Order number	315200 160
GTIN	4019208038865
Item class	33R

Description

Suitable for :

Three-jaw lathe chucks No. 310100; 310500; 310600; 310650; 310670; 310700; 310750.

Note:

- Jaws can generally be renewed in the chuck as long as the guide in the body is not worn out.
- Top, turning, and drilling jaws bought subsequently must be ground in the chuck for radial and axial run-out.

suitable for colour code: Röhm geared scroll chucks and jaws

Length L: 61 mm

Width B: 18 mm

Height H: 47.5 mm

Technical description

for chuck type	160 mm
Length L	61 mm
Height H	47.5 mm
Width B	18 mm
suitable for colour code	Röhm geared scroll chucks and jaws
Type of product	Gear scroll chuck jaws

