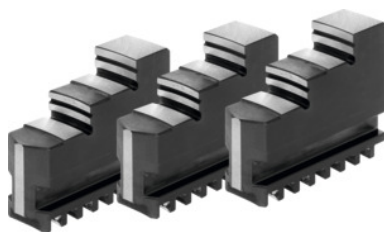


**Outside jaw set, 3 pieces, hardened, for chuck type: 200****Order data**

Order number	315200 200
GTIN	4019208038872
Item class	33R

Description**Suitable for :**

Three-jaw lathe chucks No. 310100; 310500; 310600; 310650; 310670; 310700; 310750.

Note:

- **Jaws can generally be renewed in the chuck as long as the guide in the body is not worn out.**
- **Top, turning, and drilling jaws bought subsequently must be ground in the chuck for radial and axial run-out.**

suitable for colour code: Röhm geared scroll chucks and jaws

Length L: 69 mm

Width B: 20 mm

Height H: 53.5 mm

Technical description

Width B	20 mm
Height H	53.5 mm
for chuck type	200 mm
Length L	69 mm
suitable for colour code	Röhm geared scroll chucks and jaws
Type of product	Gear scroll chuck jaws

