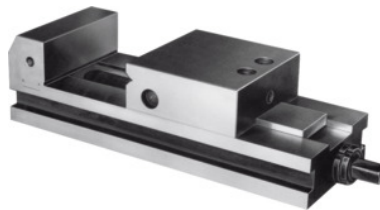




Grinding and inspection vice with spindle, stainless, Jaw width A: 100 mm



Order data

Order number	363600 100
GTIN	4045197313591
Item class	38F

Description

Version:

- **Hardened steel; precision ground all round.**

Working on 4 different faces (front, rear, and side faces).

Magnetisable chromium steel – **stainless** (for working with coolants and lubricants which aggressively cause rusting).

Function:

Pull-down system – The movable jaw is pulled down by the resulting clamping force; no lifting of the component or vibration during machining.

Application:

For **machining and inspection true to gauge.**

Also suitable for spark eroding.

Accuracy:

Within **0.003 mm** / 100 mm (system accuracy).

Supplied with:

Operating crank handle.

maximum clamping range b: 140 mm

Jaw height C: 40 mm

Overall length a: 270 mm

Overall width B: 100 mm

Weight: 9.5 kg

Technical description

Weight	9.5 kg
--------	--------

Overall length a	270 mm
maximum clamping range b	140 mm
Jaw width A	100 mm
Jaw height C	40 mm
Overall width B	100 mm
Type of product	Checking vice