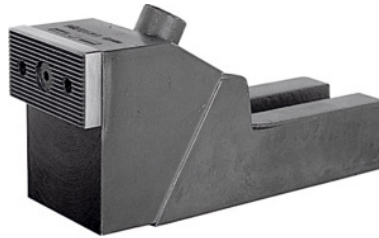




Heavy-duty clamping jaw, Jaw width: 65mm



Order data

Order number	375130 65
GTIN	4020772073213
Item class	35A

Description

Version:

Very sturdy, high version with strong pull-down and clamping forces. The angled clamping mechanism ensures that the component is securely clamped down on to the table. The interchangeable jaws are reversible, the smooth side for machined, the serrated side for unmachined components.

Application:

For lateral clamping of high components with high clamping force.

Material:

Basic body made of malleable cast iron, jaws case-hardened.

Technical description

Jaw width	65 mm
Slot width	19 mm
for slot width a	18 mm
for slot width a	16 mm
for slot width a	12 mm
for slot width a	14 mm
Minimum height	85 mm

Width across flats	14 mm
overall length	179 mm
Clamping range	8 mm
Intermediate height h_1	38 mm
Maximum height	99 mm
Type	6497
Type of product	Side clamps