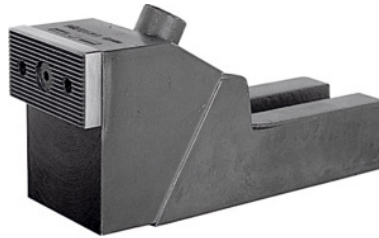




Heavy-duty clamping jaw, Jaw width: 75mm



Order data

Order number	375130 75
GTIN	4020772073220
Item class	35A

Description

Version:

Very sturdy, high version with strong pull-down and clamping forces. The angled clamping mechanism ensures that the component is securely clamped down on to the table. The interchangeable jaws are reversible, the smooth side for machined, the serrated side for unmachined components.

Application:

For lateral clamping of high components with high clamping force.

Material:

Basic body made of malleable cast iron, jaws case-hardened.

Technical description

Minimum height	100 mm
Width across flats	14 mm
Intermediate height h_1	45 mm
Jaw width	75 mm
Slot width	26 mm
Clamping range	11 mm
overall length	230 mm

for slot width a	20 mm
for slot width a	24 mm
for slot width a	28 mm
for slot width a	30 mm
for slot width a	22 mm
Maximum height	118 mm
Type	6497
Type of product	Side clamps