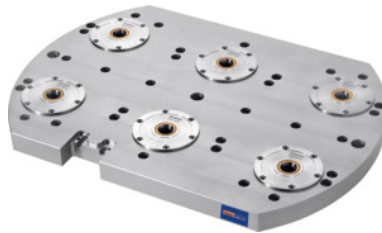


Garant**ZeroClamp base plate (depending on the machine type / machine table),
Type: 10089****Order data**

| | |
|--------------|---------------|
| Order number | 360014 10089 |
| GTIN | 4045197377067 |
| Item class | 310 |

Description**Version:**

Centre bore \varnothing 25 H7 to take the centring set. The zero point clamping of the GARANT ZeroClamp system is an important function for modern production systems, especially in automated production. Thanks to a special contact interface, it ensures precise and reliable zero point repetition accuracy. The pneumatic clamping force of the system holds workpieces securely in the desired position, making it possible to change workpieces quickly and accurately without repositioning. This reduces the set-up effort and increases productivity. The zero point clamping of the GARANT ZeroClamp system is indispensable for efficient production processes. Find out more about the innovative technology from GARANT ZeroClamp and optimise your production.

Material:

Base plate of high-tensile aluminium, surface treated.

All components of the clamping pot of stainless or corrosion-resistant steel.

Optional extras:

Clamping stud No. 360025, connection blocks No. 360017 size 12808 and size 12805.

Note:

Depending on the machine type, the arrangement may differ from that in the illustration.

Technical description

| | |
|-------------------------|--------|
| Number of clamping pots | 6 |
| Width B | 500 mm |

| | |
|----------------------------|------------|
| Clamping pot Ø | 120 mm |
| Type | 10089 |
| suitable for machine type | DMG DMU 50 |
| Ø A | 630 mm |
| Pitch S | 200 mm |
| Height H | 44 mm |
| Dimension across diagonals | no |
| Series | ZeroClamp |
| Type of product | Baseplate |

Accessories

| | |
|---|------------------|
| ZeroClamp clamping stud with internal thread Type 25M10/138 | 360025 25M10/138 |
| ZeroClamp connection block Type 12805 | 360017 12805 |
| ZeroClamp clamping stud with internal thread Type 25M16/138 | 360025 25M16/138 |
| ZeroClamp clamping stud with internal thread Type 16M8 | 360025 16M8 |
| ZeroClamp connection block Type 12808 | 360017 12808 |
| ZeroClamp clamping stud with internal thread Type 25M10 | 360025 25M10 |
| ZeroClamp clamping stud with internal thread Type 18M12/138 | 360025 18M12/138 |
| ZeroClamp cover plate for base plate Type 11648 | 360021 11648 |
| ZeroClamp clamping stud with internal thread Type 12M10/90 | 360025 12M10/90 |
| ZeroClamp clamping stud with internal thread Type 12M10 | 360025 12M10 |
| ZeroClamp clamping stud with internal thread Type 12M10/138 | 360025 12M10/138 |
| ZeroClamp clamping stud with internal thread Type 16M10 | 360025 16M10 |
| ZeroClamp clamping stud with internal thread Type 14M12/90 | 360025 14M12/90 |

| | |
|---|------------------|
| ZeroClamp clamping stud with internal thread Type 18M16 | 360025 18M16 |
| ZeroClamp clamping stud with internal thread Type 18M12 | 360025 18M12 |
| ZeroClamp clamping stud with internal thread Type 18M16/138 | 360025 18M16/138 |