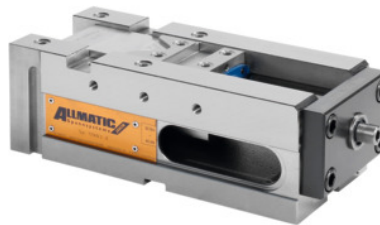




NC high pressure vice TITAN 2, Type: 125K



Order data

Order number	361302 125K
GTIN	4250364402361
Item class	34A

Description

Version:

Slides induction hardened. Side, top and bottom faces ground.

Feature:

Clamps for the modular clamping system.

Increased force travel for secure clamping of blanks in combination with a pull-down function.

Jaws secured with M12 socket head screws.

8 mm lost clearance when pulled down, 3 mm for Gripp.

Clamping can be achieved close to the neutral line.

Jaws are compatible with earlier models.

Outlet for chips and coolant. Precise location slots.

Tapped holes for component backstop and for extension.

Maximum clamping force 40 kN. With 25H6 M10 holes at 200 mm pitch for zero-point clamping system.

Feature:

Can be installed vertically.

Advantage:

Precise and powerful multi-function high-pressure vice.

- **Reliable clamping of blank parts, thanks to the extra long stroke of the high-pressure spindle.**
- **Precision machined finished parts, base body machined all round.**

Function:

Clamping exclusively with adjustable torque wrench(maximum 30 Nm).

Using special high pressure spindle and mechanical power intensifier.

Application:

For conventional clamping, grip clamping and pull-down clamping. Clamping of **flame-cut and saw-cut blanks** by **hardened replaceable gripper elements piercing** into the workpiece. Suitable for all materials up to tensile strength of 1000 N/mm². Can be used horizontally or laterally.

Supplied with:

3 hexagon L-wrenches, bi-hex socket 14 AF, 4 stepless adjustable clamps.

Optional extras:

- **Jaws No. 361331 – 361970.**
- **Torque wrench No. 656050 size 60.**
- **Adapter plate for quick jaw change Xtric No. 361293 and 361294 size 125.**
- **Adapter plates No. 361297 and 361298 size 125**

Clamping stud No. 360025.

Note:

Clamp capacity extension available using base body No. 360420 size 125.

Technical description

Colour code for suitable accessories	Titan2/TitanSense
Longitudinal slot	20 mm
Cross-slot	20 mm
Base body length a	280 mm
f	21 mm
r	77 mm
Base body width B	126 mm
m	139 mm
Type	125K
g	24 mm
Weight	22 kg
Overall length L	318 mm
Base body height c	100 mm
Type of product	Machine vice

Accessories

Case set for 5-face jaw	361365
Gripp insert with 2 spikes, height 5.2 – 6.7 mm Type	361240
5-face jaws for type FIX	361361 FIX
Pull-down set case for type 1	361346 1
Reduced-width jawfixed for type 125	361354 125
Reduced-width jawmovable for type 125	361353 125
Carrier jawfixed for type 125	361331 125
Stepped jaw for gripp insertsfixed for type 125	361348 125
Stepped jaw for gripp insertsmovable for type 125	361347 125
Workpiece back-stop 3-dimensional Type 125	360435 125
Carrier jawmovable pivoting for type 125	361336 125
Workpiece backstop	360555
Gripp insert carbide height 7.1 - 8.6 mm Type	361242
Pull-down set case for type 2	361346 2
5-face jaws for type MOBIL	361361 MOBIL