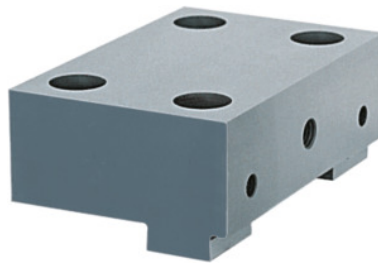




Base jaw fixed, for type: 90



Order data

Order number	361520 90
GTIN	4250364401142
Item class	34A

Description

Version:

Fixed jaw.

Application:

- For fitting all high pressure jaws No. 362390 to 362600.
- For fitting parallel inserts No. 361950; 361960; 361970.

Material:

Hardened steel, ground surfaces.

Suitable for :

NC8, Garant-NC, Titan.

Supplied with:

Fastening screws.

Jaw width b: 89.5 mm

Jaw height h: 34 mm

Jaw length l: 63 mm

for type: 90

suitable for colour code: TC

suitable for colour code: LC

Technical description

for type	90
Jaw height h	34 mm

Jaw length l	63 mm
Jaw width b	89.5 mm
suitable for colour code	TC
suitable for colour code	LC
suitable for colour code	NC8
Type of product	Vice - jaw