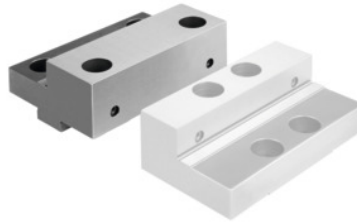




Stepped jaw fixed, for type: 125



Order data

Order number	361440 125
GTIN	4250364400978
Item class	34A

Description

Version:

Sizes 90, 125, and 160 with **Click quick-change system**, for No. 361440 only in sizes 90 and 125.
Sizes 90, 125 with Click quick-change system.

Application:

Accepts parallel inserts on high side or stepped side (No. 361950; 361960; 361970).

Material:

Hardened steel, ground surfaces.

Suitable for :

Allmatic NC-DUO No. 360600 and Allmatic NC (previous version No. 360000, up to year 1998).

Supplied with:

Fastening screws.

Jaw width b: 124.4 mm

Jaw height h: 39.5 mm

Height h_1 : 20 mm

Jaw length l: 87 mm

Length l_1 : 42 mm

suitable for colour code: Duo Plus

Technical description

Jaw height h	39.5 mm
Jaw width b	124.4 mm

suitable for colour code	Duo Plus
suitable for colour code	HOLEX NC
for type	125
Jaw length l	87 mm
Length l ₁	42 mm
Height h ₁	20 mm
Type of product	Vice jaws