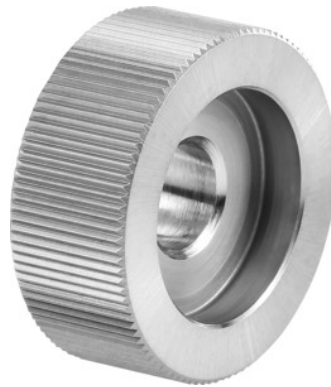




## Knurl PM, AA, Knurl $\varnothing$ d1 $\times$ knurl width w / pitch: 15X6/0,6mm



### Order data

Order number	290150 15X6/0,6
GTIN	4030741249723
Item class	29I

### Description

#### Version:

With 45° chamfer.

Wear-resistant powder metal (PM).

#### Note:

**Further sizes and profiles available on request.**

### Technical description

Knurl bore $\varnothing$ d <sub>2</sub>	6 mm
Tooth pitch	0.6
Knurl width w	6 mm
Knurl $\varnothing$ d <sub>1</sub>	15 mm
Knurled countersunk $\varnothing$ d <sub>3</sub>	11 mm
Knurl type	AA
Type of product	Self-centering knurling tool

**User data**

	<b>Suitability</b>	<b>V<sub>c</sub></b>	<b>ISO code</b>
Alu plastics	suitable	70 m/min	N
Aluminium (short chipping)	suitable	35 m/min	N
Steel < 500 N/mm <sup>2</sup>	suitable	60 m/min	P
Steel < 750 N/mm <sup>2</sup>	suitable	45 m/min	P
Steel < 900 N/mm <sup>2</sup>	suitable	30 m/min	P
INOX < 900 N/mm <sup>2</sup>	suitable	50 m/min	M
INOX > 900 N/mm <sup>2</sup>	suitable	25 m/min	M
CuZn	suitable	65 m/min	N
Oil	suitable		
wet maximum	suitable only under restricted conditions		
wet minimum	suitable only under restricted conditions		