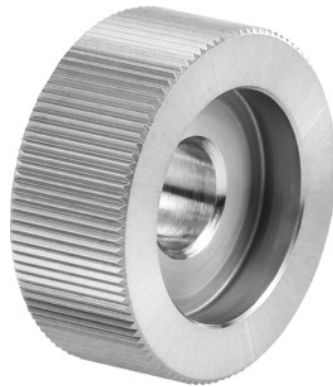


**Knurl PM, AA, Knurl \varnothing d1 \times knurl width w / pitch: 15X6/1,5mm****Order data**

Order number	290150 15X6/1,5
GTIN	4030741265389
Item class	29I

Description**Version:**

With 45° chamfer.

Wear-resistant powder metal (PM).

Note:

Further sizes and profiles available on request.

Technical description

Knurl bore \varnothing d ₂	6 mm
Knurl \varnothing d ₁	15 mm
Tooth pitch	1.5
Knurl width w	6 mm
Knurled countersunk \varnothing d ₃	11 mm
Knurl type	AA
Type of product	Self-centering knurling tool

User data

	Suitability	V_c	ISO code
Alu plastics	suitable	70 m/min	N
Aluminium (short chipping)	suitable	35 m/min	N
Steel < 500 N/mm ²	suitable	60 m/min	P
Steel < 750 N/mm ²	suitable	45 m/min	P
Steel < 900 N/mm ²	suitable	30 m/min	P
INOX < 900 N/mm ²	suitable	50 m/min	M
INOX > 900 N/mm ²	suitable	25 m/min	M
CuZn	suitable	65 m/min	N
Oil	suitable		
wet maximum	suitable only under restricted conditions		
wet minimum	suitable only under restricted conditions		