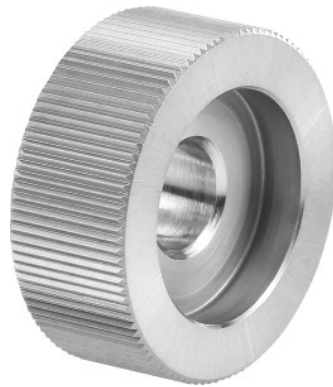


**Knurl PM, AA, Knurl  $\varnothing$  d1  $\times$  knurl width w / pitch: 20X8/1,5mm****Order data**

Order number	290150 20X8/1,5
GTIN	4030741265273
Item class	29I

**Description****Version:**

With 45° chamfer.

Wear-resistant powder metal (PM).

**Note:**

**Further sizes and profiles available on request.**

**Technical description**

Tooth pitch	1.5
Knurl $\varnothing$ d <sub>1</sub>	20 mm
Knurl bore $\varnothing$ d <sub>2</sub>	6 mm
Knurl width w	8 mm
Knurled countersunk $\varnothing$ d <sub>3</sub>	13 mm
Knurl type	AA
Type of product	Self-centering knurling tool

**User data**

	<b>Suitability</b>	<b>V<sub>c</sub></b>	<b>ISO code</b>
Alu plastics	suitable	70 m/min	N
Aluminium (short chipping)	suitable	35 m/min	N
Steel < 500 N/mm <sup>2</sup>	suitable	60 m/min	P
Steel < 750 N/mm <sup>2</sup>	suitable	45 m/min	P
Steel < 900 N/mm <sup>2</sup>	suitable	30 m/min	P
INOX < 900 N/mm <sup>2</sup>	suitable	50 m/min	M
INOX > 900 N/mm <sup>2</sup>	suitable	25 m/min	M
CuZn	suitable	65 m/min	N
Oil	suitable		
wet maximum	suitable only under restricted conditions		
wet minimum	suitable only under restricted conditions		