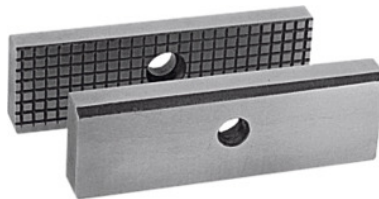




## Pair of clamping jaws with serrated faces, for jaw width: 160mm



### Order data

Order number	362400 160
GTIN	4250364400299
Item class	34A

### Description

#### Application:

The additional jaws extend the application range greatly. Hydraulic compensation jaws for multiple clamping of round material or for clamping components with surface deviations on request.

#### Suitable for:

**GARANT** NC No. 360510; 360465; 361290.

**HOLEX** No. 362010.

**ALLMATIC** No. 362250 – 362300 and also with base jaw No. 361500 – 361520 suitable for version NC8. Adaptor jaws No. 361600, 361620 also suitable for all NC versions.

#### Note:

Please order attachment screws separately - No. 362621 M10x23.

### Technical description

for jaw width	160 mm
suitable for colour code	Basic
suitable for colour code	TC
suitable for colour code	HD-Allmatic
suitable for colour code	HD-HOLEX
suitable for colour code	LC
suitable for colour code	HiPo

suitable for colour code	NC8
suitable for colour code	Titan2/TitanSense
Type of product	Vice jaws