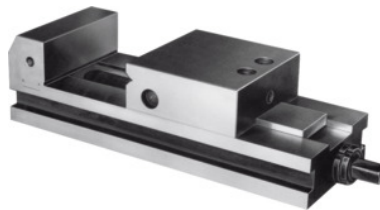




Grinding and inspection vice with spindle, Jaw width A: 65mm



Order data

Order number	363550 65
GTIN	4045197313560
Item class	38F

Description

Version:

- **Hardened steel; precision ground all round.**
- Working on 4 different faces** (front, rear, and side faces).
- With horizontal **ground Vee profile.**

Function:

Pull-down system – The movable jaw is pulled down by the resulting clamping force; no lifting of the component or vibration during machining.

Application:

For **machining and inspection true to gauge.**

Accuracy:

Within **0.003 mm** / 100 mm (system accuracy).

Supplied with:

Operating crank handle.

Technical description

Overall length a	220 mm
maximum clamping range b	100 mm
Weight	4.3 kg
Jaw width A	65 mm
Jaw height C	37 mm

Overall width B	65 mm
Type of product	Checking vice