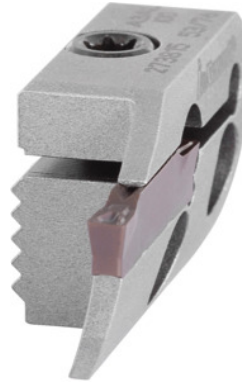


Garant

Blade carrier, convex for face grooving, right-hand, Ø range for groove D1 / D2: 67/100mm

**Order data**

| | |
|--------------|---------------|
| Order number | 273826 67/100 |
| GTIN | 4045197867612 |
| Item class | 21W |

Description**Version:**

Extremely rigid connection and precise clamping due to serrated contact face between the toolholder and clamp.

Application:

In conjunction with toolholders No. 273800 to 273811.

Spare part:

Clamp screw No. 279815 9.

Attention:

Without clamping screws (these are supplied with the toolholders).

Note:

D_1 = minimum Ø for the first groove / D_2 = maximum Ø for the first cut.

Technology values should be reduced by 30 – 50% depending on the clamping situation and material.

Maximum feed rate 0.025 mm.

Groove width w: 3 mm

maximum cutting depth t_{max} : 18 mm

Technical description

| | |
|--------------------------------------|------------|
| maximum 1st groove $\varnothing D_2$ | 100 mm |
| maximum cutting depth t_{\max} | 18 mm |
| minimum 1st groove $\varnothing D_1$ | 67 mm |
| Application type | right-hand |
| Groove width w | 3 mm |
| Type of product | Cartridges |

Accessories

| | |
|-----------------------|----------|
| Clamping screw Type 9 | 279815 9 |
| Clamping screw | 279910 |