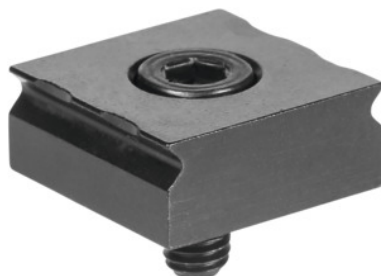




Ultra clamping claw, rectangular, Type: 2



Order data

Order number	370034 2
GTIN	4046368339341
Item class	37M

Description

Version:

- **The contour of the claw generates a slight pull-down force.**
- **The low clamping height saves material.**
- **Higher cutting values due to positive clamping.**

Application:

For use as a stop in jigs in conjunction with Pitbull clamps No. 370025; 370030 or eccentric clamps No. 370001; 370005; 370008.

Ideal for multiple clamping.

Supplied with:

1 clamping claw with screw.

Technical description

Height H	7.92 mm
recommended clamping height	1.5 - 3 mm
Width B	19.05 mm
Length L	19.05 mm
Ø D ₁	for M5
Screw to standard	M5×12

Standard	DIN 7984
Type of product	Clamping claws