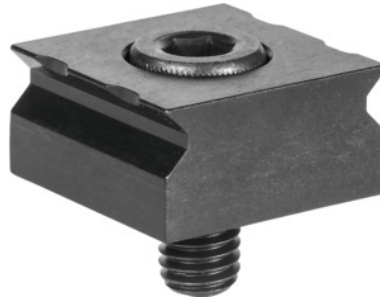




Ultra clamping claw, rectangular, Type: 4



Order data

Order number	370034 4
GTIN	4046368331505
Item class	37M

Description

Version:

- The contour of the claw generates a slight pull-down force.
- The low clamping height saves material.
- Higher cutting values due to positive clamping.

Application:

For use as a stop in jigs in conjunction with Pitbull clamps No. 370025; 370030 or eccentric clamps No. 370001; 370005; 370008.

Ideal for multiple clamping.

Supplied with:

1 clamping claw with screw.

Technical description

recommended clamping height	1.5 - 5.6 mm
Length L	25.4 mm
Ø D ₁	for M8
Height H	12.7 mm
Width B	25.4 mm
Screw to standard	M8×16

Standard	DIN 912
Type of product	Clamping claws