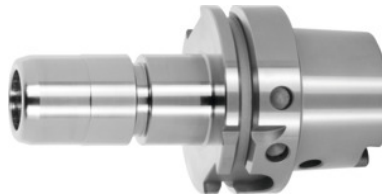




Heavy-duty chuck slim, HSK-A 63, Ø D1: 16 mm



Order data

Order number	305539 16
GTIN	4045197871831
Item class	32A

Description

Version:

Clamping force up to 150 Nm at Ø 12, 300 Nm at Ø 16 and 400 Nm at Ø 20.

- Low friction due to needle bearings.
- Protected with anti-corrosion coating.
- Dust-tight and watertight.
- Very high clamping force prolongs tool life and improves surface quality.

Advantage:

Low interference contour due to slim design.

Application:

For clamping tools with plain shank.

Supplied with:

Clamping nut.

Optional extras:

Coolant tube No. 309880, collets No. 309566 – 309570 and No. 309575 – 309576, wrench No. 309747 for No. 305539.

Machining strategy: HPC

Overhang dimension A: 90 mm

Collet outer Ø D: 38 mm

Suitable wrench No. 309747: S16

Technical description

Suitable wrench No. 309747	S16
----------------------------	-----

Overhang dimension A	90 mm
Collet outer \varnothing D	38 mm
Clamping \varnothing D ₁	16 mm
Adapter	HSK-A 63
Arbor standard	ISO 12164-1
Arbor standard	DIN 69893
Shape	A
Balance quality G at rotational speed	G 6.3 at 15,000 rpm
Concentricity	$\leq 5 \mu\text{m}$
Machining strategy	HPC
Type of product	Heavy-duty chuck

Accessories

Pull stud wrench for heavy-duty chuck Type S16	309747 S16
--	------------