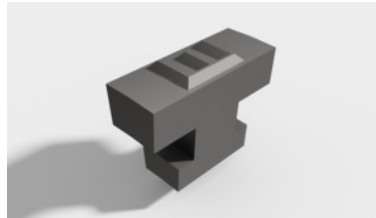




## Character segment Character height 2 mm, Symbol: E



### Order data

Order number	291950 E
GTIN	4030741556296
Item class	29H

### Description

**Version:**

Return spring system with replaceable segments. Flexible and with adaptable shank.

**Advantage:**

Marking up to the collar is possible.

**Suitable for:**

Marking tool No. 291920 and 291925.

**Recommendation:**

Optionally, for secure storage of interchangeable segments/character sets, article No. 291990\_box can be ordered.

**Attention:**

Observe assignment between tools and segments.

**Note:**

Marking roller with  $\varnothing$  30mm: Fitting at least 17 segments possible.  
Marking roller with  $\varnothing$  50mm: Fitting at least 29 segments possible.  
The maximum number depends on the respective character width.

### Technical description

Character	E
Character height	2 mm
Labelling rollers $\varnothing$	30 mm

Type of product

Character segment