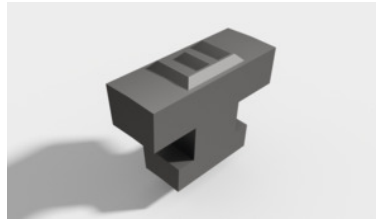




## Character segment Character height 2 mm, Symbol: E



### Order data

|              |               |
|--------------|---------------|
| Order number | 291954 E      |
| GTIN         | 4030741641336 |
| Item class   | 29H           |

### Description

**Version:**

Return spring system with replaceable segments. Flexible and with adaptable shank.

**Advantage:**

Marking up to the collar is possible.

**Suitable for:**

Marking tool No. 291930 and 291935.

**Recommendation:**

Optionally, for secure storage of interchangeable segments/character sets, article No. 291990\_box can be ordered.

**Attention:**

Observe assignment between tools and segments.

**Note:**

Marking roller with  $\varnothing$  30mm: Fitting at least 17 segments possible.  
 Marking roller with  $\varnothing$  50mm: Fitting at least 29 segments possible.  
 The maximum number depends on the respective character width.

### Technical description

|                                 |       |
|---------------------------------|-------|
| Character                       | E     |
| Character height                | 2 mm  |
| Labelling rollers $\varnothing$ | 50 mm |

Type of product

Character segment