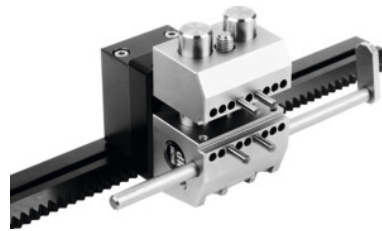




## Extension set, Type: S



### Order data

Order number	494470 S
GTIN	2050001670656
Item class	49K

### Description

#### Version:

Modular, flexible, and versatile sets of high-quality aluminium components with long-life Hardcoat surface. All construction sets are specifically extendable. Horizontal and vertical mounting on the rack rail (does not include attachment set No. 494475). Precision vice with offset jaws and exchangeable guide pillars for extending the clamping range.

#### Supplied with:

Including 8 parallel pins (of which 4 are offset) for pin clamping, adjustable stop with scale, separate pillar set.

### Technical description

Clamping range	0 - 75 mm
Jaw width	50 mm
Type of product	Clamping set

### Accessories

Attachment set for No. 494470 / 494471	494475
--	--------