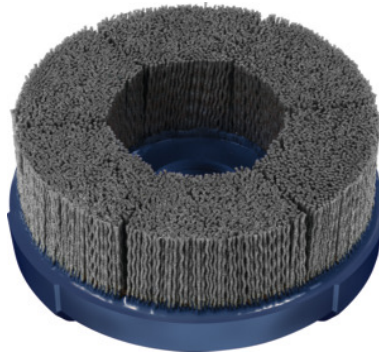


Garant**Disc brush, silicon carbide (SiC), Ø 70 mm, Grit: 80****Order data**

| | |
|--------------|---------------|
| Order number | 575010 80 |
| GTIN | 4045197892607 |
| Item class | 51P |

Description**Version:**

With longitudinal groove for clamping on face mill arbors (DIN 6357) and combination face mill adapters (DIN 6358).

Disc brushes with **extremely tightly packed abrasive bristles (right to the edge of the brush)** embedded in the plastic pad. The bristles support each other, giving a **highly stable shape**. Very long working life.

Nylon bristles with very high **silicon carbide grit content** for general-purpose use.

Advantage:

- **Workpiece rework directly after the machining process.**
- **Reproducible results due to constantly exposed grinding grit.**
- **Good process reliability thanks to high shape stability and shape accuracy.**
- **Quick and secure installation without further accessories.**
- **Very low radial run-out.**

Application:

On **CNC machining centres** and when used by **robots**, preferably **wet grinding** with cooling lubricant. Machining of flat components: precise **deburring, edge rounding, finish machining** after milling, **surface finishing** e.g. of sealing and mating faces.

Note:

Special versions available on request.

Technical description

| | |
|--|-------------------------------|
| Grit | 80 |
| Bristle thickness | 1.2 mm |
| Grit designation | coarse |
| Infeed | 0.8 (fine) – 1.5 (coarse) mm |
| Feed | 2500 - 5000 mm/min |
| Product name attribute | Ø 70 mm |
| Brush Ø D ₁ | 70 mm |
| Disc dia. D ₂ | 76 mm |
| Grinding media | Silicon carbide (SiC) |
| Grinding medium code | SiC |
| Working area Ø | 70 mm |
| Bore Ø d ₁ | 22 with groove mm |
| Length of brush section H ₁ | 35 mm |
| recommended speed | 1900 - 2300 min ⁻¹ |
| maximum speed | 4500 min ⁻¹ |
| Type of product | Disc brush |

User data

| | Suitability | V _c | ISO code |
|--------------------------------|---|----------------|----------|
| Alu Mg | suitable | | |
| Steel < 900 N/mm ² | suitable | | |
| Steel < 1400 N/mm ² | suitable only under restricted conditions | | |
| Steel < 55 HRC | suitable only under restricted conditions | | |
| Steel < 60 HRC | suitable only under restricted conditions | | |
| INOX | suitable only under restricted conditions | | |

| | |
|-------------|---|
| Ti | suitable only under restricted conditions |
| GG(G) | suitable only under restricted conditions |
| CuZn | suitable |
| Uni | suitable |
| wet maximum | suitable |
| dry | suitable only under restricted conditions |

Accessories

Tightening screw with internal cooling for mandrel Ø 22 mm

575096 22