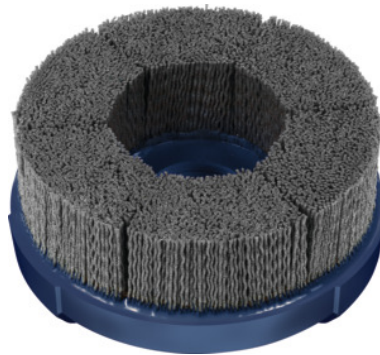


**Garant****Disc brush, silicon carbide (SiC), Ø 144 mm, Grit: 180****Order data**

Order number	575018 180
GTIN	4045197892713
Item class	51P

**Description****Version:**

With longitudinal groove for clamping on face mill arbors (DIN 6357) and combination face mill adapters (DIN 6358).

Disc brushes with **extremely tightly packed abrasive bristles (right to the edge of the brush)** embedded in the plastic pad. The bristles support each other, giving a **highly stable shape**. Very long working life.

Nylon bristles with very high **silicon carbide grit content** for general-purpose use.

**Advantage:**

- **Workpiece rework directly after the machining process.**
- **Reproducible results due to constantly exposed grinding grit.**
- **Good process reliability thanks to high shape stability and shape accuracy.**
- **Quick and secure installation without further accessories.**
- **Very low radial run-out.**

**Application:**

On **CNC machining centres** and when used by **robots**, preferably **wet grinding** with cooling lubricant. Machining of flat components: precise **deburring, edge rounding, finish machining** after milling, **surface finishing** e.g. of sealing and mating faces.

**Note:**

Special versions available on request.

## Technical description

Bristle thickness	1 mm
Grit designation	fine
Grit	180
Infeed	0.8 (fine) – 1.5 (coarse) mm
Feed	4500 - 8000 mm/min
Product name attribute	Ø 144 mm
Brush Ø D <sub>1</sub>	144 mm
Disc dia. D <sub>2</sub>	150 mm
Grinding media	Silicon carbide (SiC)
Grinding medium code	SiC
Working area Ø	144 mm
Bore Ø d <sub>1</sub>	32 with groove mm
Length of brush section H <sub>1</sub>	43 mm
recommended speed	1000 - 1200 min <sup>-1</sup>
maximum speed	2500 min <sup>-1</sup>
Type of product	Disc brush

## User data

	Suitability	V <sub>c</sub>	ISO code
Alu Mg	suitable		
Steel < 900 N/mm <sup>2</sup>	suitable		
Steel < 1400 N/mm <sup>2</sup>	suitable only under restricted conditions		
Steel < 55 HRC	suitable only under restricted conditions		
Steel < 60 HRC	suitable only under restricted conditions		
INOX	suitable only under restricted conditions		

Ti	suitable only under restricted conditions
GG(G)	suitable only under restricted conditions
CuZn	suitable
Uni	suitable
wet maximum	suitable
dry	suitable only under restricted conditions

---

## Accessories

Tightening screw with internal cooling for mandrel Ø 32 mm

575096 32