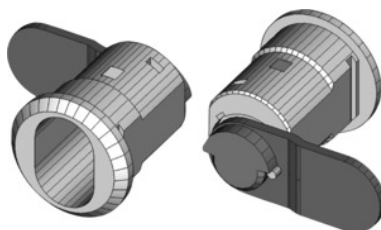




Barrel sleeve 225-010-5 without lock barrel



Order data

Order number	914200
GTIN	2050000977596
Item class	93B

Description

Version:

Locking tongue 39 mm long, 15.5 mm wide, 1 mm joggle, handle locking rotation 180°.

Suitable for:

Doors of all KÖGL workbenches from build year mid-2000 to mid-2008. **Exception:** Not for doors of workbenches No. 931500 (sleeve No. 914201) and not for HOLEX workbenches No. 934100 – 934170 (sleeve No. 914202).

Supplied with:

Barrel sleeve complete with locking tongue, including fastening nut.

Note:

In doors of Kompakt workbenches (No. 930950; 931000; 931400; 931600; 931700; 931800) fitted with barrel sleeve No. 914200, also after mid-2008.

Technical description

Recess for locking cylinder shape	yes
suitable for	Doors of all KÖGL workbenches
Locking tongue length	39 mm
HO locking system barrels can be fitted	yes
not suitable for	Doors of workbenches No. 931500; 934100– 934170

The lock barrel can be fitted directly	yes
Locking type	Barrel sleeve for cylinder lock
Locking lever travel	180 degrees
Locking tongue width	15.5 mm
for workstations and storage solutions up to build year	Mid-2008
Shape of locking tongue	1 mm cranked
Supplied without lock barrel	yes
Fastening materials supplied	yes
Material of sleeve	Brass
for workstations and storage solutions from build year	Mid-2000
Lock barrels can be changed	yes
Type of product	Barrel sleeve