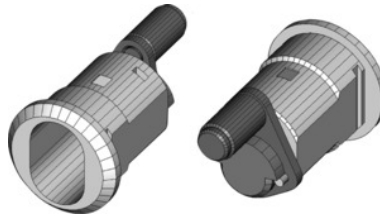




Barrel sleeve 225-010-9 without lock barrel



Order data

Order number	914202
GTIN	2050000977619
Item class	93B

Description

Version:

Locking arm with pin \varnothing 8 mm, handle locking rotation 180°.

Suitable for :

HOLEX workbenches No. 934100 – 934170 from build year mid-2000.

HOLEX workbenches No. 929500 – 929570 from build year mid-2019.

Supplied with:

Barrel sleeve complete with locking tongue, including fastening clip.

Technical description

Locking lever travel	180°
for workstations and storage solutions from build year	Mid-2000
Fastening materials supplied	yes
Material of sleeve	Brass
Lock barrels can be changed	yes
Recess for locking cylinder shape	yes
HO locking system barrels can be fitted	yes
Locking type	Barrel sleeve for cylinder lock
Pin \varnothing	8 mm

Supplied without lock barrel	yes
suitable for	HOLEX workbenches No. 934100 – 934170
The lock barrel can be fitted directly	yes
Type of product	Barrel sleeve