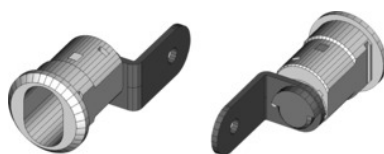


**Barrel sleeve 225-010-40 without lock barrel****Order data**

Order number	914207
GTIN	2050000977657
Item class	93B

**Description****Version:**

Angled locking tongue 30.5 mm long, 15.5 mm wide, handle locking rotation 180°.

**Suitable for :**

All drawer units for workbenches, system workstations, work tables, tool cabinets, and roller cabinets in the number range 920000 - 920130 and 932000 - 933427; 933500, 933720 - 933900 and 934800 - 934830 from build year mid-2000 to mid-2008.

**Exception:** Not for doors in the above number ranges (barrel sleeve No. 914200), nor for full-width drawers in workbench No. 932600 (barrel sleeve No. 914203 since August 2006).

**Supplied with:**

Barrel sleeve complete with locking tongue, including fastening nut.

**Technical description**

Locking lever travel	180 °
not suitable for	Doors in the no. range drawer units
The lock barrel can be fitted directly	yes
Material of sleeve	Brass
for workstations and storage solutions from build year	Mid-2000
for workstations and storage solutions up to build year	Mid-2008
Locking tongue width	15.5 mm
Supplied without lock barrel	yes

Shape of locking tongue	angled
suitable for	Drawer unit groups 92, 93
Lock barrels can be changed	yes
Locking type	Barrel sleeve for cylinder lock
Locking tongue length	30.5 mm
Recess for locking cylinder shape	yes
Fastening materials supplied	yes
HO locking system barrels can be fitted	yes
Type of product	Barrel sleeve