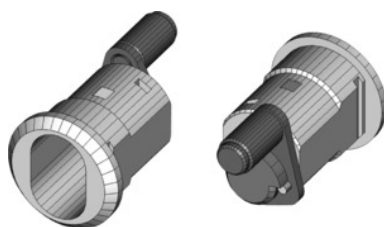


**Barrel sleeve 225-010-43 without lock barrel****Order data**

Order number	914208
GTIN	2050000977664
Item class	93B

Description**Version:**

Locking arm with pin Ø 8 mm, handle locking rotation 90°.

Suitable for :

GARANT roller cabinets No.915000, 915900, 917000, 917900, 918000, 918100 and 919000 from build year mid-2000 – mid-2006. GARANT roller cabinets No. 916300, 916302, 916310, 916320, 916330, 916331, 916332, 916333, 916338, 916340, 916350, 916400, 916442, 916452 from build year mid-2006 and cabinet extensions No. 916480, 916485.

GARANT roller cabinets No.914500, 914510, 914705, 914710 from build year mid-2017.

Supplied with:

Barrel sleeve complete with locking tongue, including fastening nut and clip.

Technical description

Pin Ø	8 mm
Lock barrels can be changed	yes
Material of sleeve	Brass
Supplied without lock barrel	yes
Locking lever travel	90 °
for workstations and storage solutions from build year	Mid-2000
Locking type	Barrel sleeve for cylinder lock

HO locking system barrels can be fitted	yes
Recess for locking cylinder shape	yes
The lock barrel can be fitted directly	yes
Fastening materials supplied	yes
suitable for	GARANT roller cabinets
Type of product	Barrel sleeve