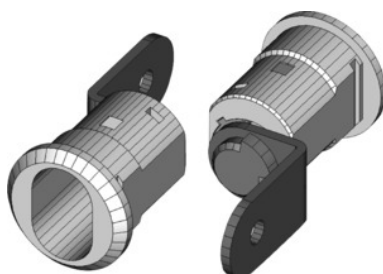


**Barrel sleeve 225-010-41 without lock barrel****Order data**

Order number	914209
GTIN	2050000977671
Item class	93B

Description**Version:**

Angled locking tongue 30.5 mm long, 15.5 mm wide, handle locking rotation 90°.

Suitable for:

GARANT roller cabinets No. 915500 from build year mid-2000 to mid-2006. GARANT roller cabinets No. 916360 from build year mid-2006. GARANT roller cabinets No. 914505 from build year mid-2017.

Supplied with:

Barrel sleeve complete with locking tongue, including fastening nut.

Technical description

for workstations and storage solutions up to build year	No. 915500 to mid-2006
Locking lever travel	90 degrees
Fastening materials supplied	yes
Lock barrels can be changed	yes
The lock barrel can be fitted directly	yes
HO locking system barrels can be fitted	yes
Locking tongue width	15.5 mm

Locking tongue length	30.5 mm
Supplied without lock barrel	yes
Locking type	Barrel sleeve for cylinder lock
Recess for locking cylinder shape	yes
Material of sleeve	Brass
Shape of locking tongue	angled
for workstations and storage solutions from build year	No. 915500 from mid-2000; No. 916360 from mid-2006
Type of product	Barrel sleeve