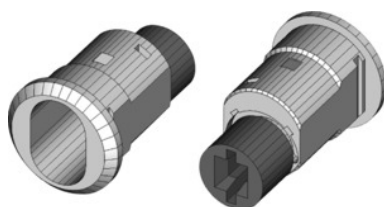




## Barrel sleeve 424-010-2 without lock barrel



### Order data

Order number	914210
GTIN	2050000977688
Item class	93B

### Description

#### Version:

Cylindrical adapter (Ø 15 mm) with 6 mm internal square, lock adapter travel 360°.

#### Suitable for :

Drawer units for workbenches No. 933435 – 933450; No. 947220; 947230 and tool cabinets No. 942905 – 944100 from build year mid-2000 to mid-2008. **Exception:** Not for doors in the above number range. (Twist handle No. 914170).

#### Supplied with:

Barrel sleeve complete with cylindrical adapter, including fastening nut.

### Technical description

Supplied without lock barrel	yes
Supplied with	with cylindrical adapter
Fastening materials supplied	yes
cylindrical adapter Ø	15 mm
Square socket drive	6 mm
Locking lever travel	360 °
Recess for locking cylinder shape	yes
Locking type	Barrel sleeve for cylinder lock

for workstations and storage solutions up to build year	Mid-2008
for workstations and storage solutions from build year	Mid-2000
The lock barrel can be fitted directly	yes
Lock barrels can be changed	yes
Material of sleeve	Brass
HO locking system barrels can be fitted	yes
Type of product	Barrel sleeve