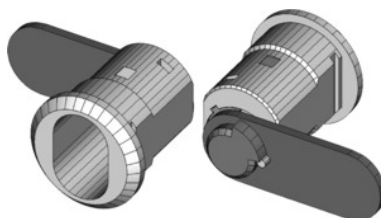


**Barrel sleeve 225-010-6 without lock barrel****Order data**

Order number	914211
GTIN	2050000977695
Item class	93B

**Description****Version:**

Locking tongue 43 mm long, 15.5 mm wide, handle locking rotation 90°.

**Suitable for:**

**Right-hung doors** of garment lockers No. 958710 – 958750 from build year mid-2000 to mid-2005.

**Supplied with:**

Barrel sleeve complete with locking tongue, including fastening nut.

**Technical description**

HO locking system barrels can be fitted	yes
Locking lever travel	90 degrees
Material of sleeve	Brass
Recess for locking cylinder shape	yes
Lock barrels can be changed	yes
Locking tongue length	43 mm
for workstations and storage solutions from build year	Mid-2000
Supplied without lock barrel	yes
Locking type	Barrel sleeve for cylinder lock

The lock barrel can be fitted directly	yes
for workstations and storage solutions up to build year	Mid-2005
Locking tongue width	15.5 mm
Type of product	Barrel sleeve