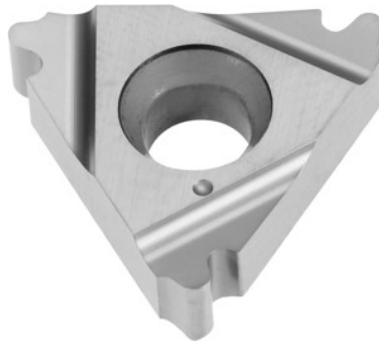


**Garant****Full profile insert 30°, external, left-hand, HB7125, TPI: 6****Order data**

Order number	270970 6
GTIN	4045197929334
Item class	21J

**Technical description**

Number of turns/inch	6
Tool material	Carbide
Internal/external application	external
Application type	left-hand
Indexable insert profile	Full profile
Grade	HB7125
Thread type	RD
Thread type	RD-LH
Thread standard	DIN 405
Flank angle round	30 degrees
Thickness	3.6 mm
Insert size L	16 mm

Type of product

Indexable insert for thread turning

**User data**

	<b>Suitability</b>	<b>V<sub>c</sub></b>	<b>ISO code</b>
INOX < 900 N/mm <sup>2</sup>	suitable	120 m/min	M
INOX > 900 N/mm <sup>2</sup>	suitable	120 m/min	M
Ti > 850 N/mm <sup>2</sup>	suitable	60 m/min	S
continuous	suitable		
irregular	suitable		
interrupted	suitable		
wet maximum	suitable		