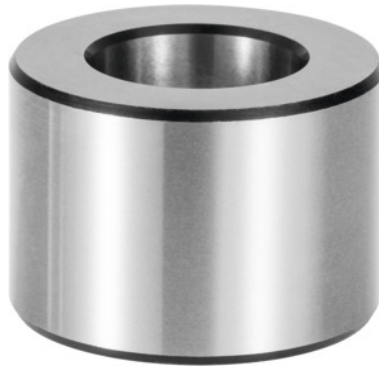


**Garant****Central bushing, Type × length I1: 20X20mm****Order data**

Order number	370108 20X20
GTIN	4045197949486
Item class	31E

**Description****Application:**

The plate to be clamped is equipped with **two central bushings** and **two floating bushings**, so as to achieve optimum repetition accuracy.

**Material:**

Case-hardened steel

**Note:**

Specification of the mounting bore, height  $\pm 0.05$  mm and  $\varnothing$  H7.

**Technical description**

$\varnothing d_1$	20 mm
$\varnothing d_2$ n6	35 mm
Type of product	Bush