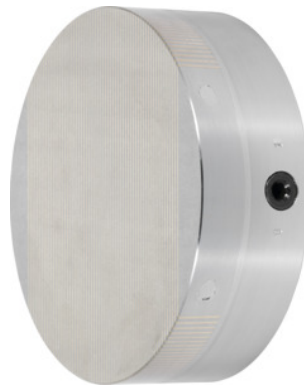




Permanent magnetic chuck, with parallel pole distribution, Chuck Ø: 130mm



Order data

Order number	380776 130
GTIN	2050001943637
Item class	33S

Description

Version:

Powerful magnetic system with **neodymium** magnets and low magnetic field height.

Continuously adjustable magnetic force.

Application:

For grinding and turning.

For clamping small and thin to medium workpieces.

Note:

The centre can be bored out to size "J".

Technical description

Centring hole depth	4 mm
Magnetic field height	8 mm
Height tolerance	0 / -1 mm
Parallel pole distribution	1.9 mm
Centre Ø	90 mm

Weight	5 kg
Pitch circle Ø	115 mm
Height	50 mm
Chuck Ø	130 mm
Thread Ø	4×M8
Grinding allowance in pole area	5 mm
Nominal clamping force	100 N/cm ²
possible to bore out to centre hole "J"	20×14 mm
Type of product	Magnetic clamping chuck