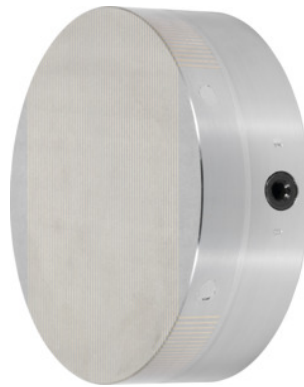




Permanent magnetic chuck, with parallel pole distribution, Chuck Ø: 150mm



Order data

Order number	380776 150
GTIN	2050001943644
Item class	33S

Description

Version:

Powerful magnetic system with **neodymium** magnets and low magnetic field height.

Continuously adjustable magnetic force.

Application:

For grinding and turning.

For clamping small and thin to medium workpieces.

Note:

The centre can be bored out to size "J".

Technical description

Nominal clamping force	100 N/cm ²
Parallel pole distribution	1.9 mm
Centring hole depth	4 mm
Weight	7 kg
Magnetic field height	8 mm

Grinding allowance in pole area	5 mm
Chuck Ø	150 mm
Pitch circle Ø	132 mm
Thread Ø	4×M8
Height tolerance	0 / -1 mm
Centre Ø	110 mm
possible to bore out to centre hole "J"	24×5 mm
Height	50 mm
Type of product	Magnetic clamping chuck