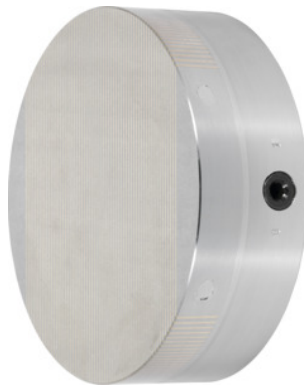




Permanent magnetic chuck, with parallel pole distribution, Chuck Ø: 250mm



Order data

| | |
|--------------|---------------|
| Order number | 380776 250 |
| GTIN | 2050001943668 |
| Item class | 33S |

Description

Version:

Powerful magnetic system with **neodymium** magnets and low magnetic field height.

Continuously adjustable magnetic force.

Application:

For grinding and turning.

For clamping small and thin to medium workpieces.

Note:

The centre can be bored out to size "J".

Technical description

| | |
|----------------------------|-----------------------|
| Pitch circle Ø | 192 mm |
| Parallel pole distribution | 1.9 mm |
| Nominal clamping force | 100 N/cm ² |
| Height tolerance | 0 / -1 mm |
| Magnetic field height | 8 mm |

| | |
|---|-------------------------|
| Grinding allowance in pole area | 5 mm |
| Centring hole depth | 4 mm |
| Weight | 20 kg |
| Chuck Ø | 250 mm |
| Height | 57 mm |
| Thread Ø | 4×M8 |
| possible to bore out to centre hole "J" | 250×5 mm |
| Centre Ø | 250 mm |
| Type of product | Magnetic clamping chuck |