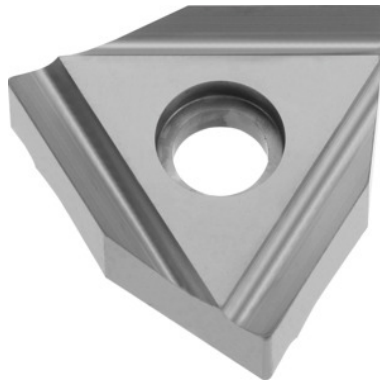


 KOMET

WNHX 08T302 right-hand, W04, Type: P25

Order data

Order number	268890 P25
GTIN	4047109072725
Item class	24T

Description

WNHX 08T302 right-hand P25 Grade: P25

Cutting depth a_p : 0.5 - 1.5 mm

Feed f : 0.05 - 0.25 mm/rev.

Cutting speed v_c main application: 120 - 300 m/min

Cutting speed v_c secondary application: 100 - 180 m/min

Technical description

Finishing/roughing assignment	Finishing
Tool material	Carbide
Cutting depth a_p	0.5 - 1.5 mm
Cutting conditions	slightly interrupted
Cutting speed v_c main application	120 - 300 m/min
Grade	P25
Main application	P
Cutting speed v_c secondary application	100 - 180 m/min

Corner radius	0.2 mm
Feed f	0.05 - 0.25 mm/rev.
Secondary application	M
Coating	coated
ISO code indexable insert	WNHX 08T302 R
Number of changes/inserts	3
Product name attribute	W04
Rake	18 °
Type of product	Indexable insert for turning