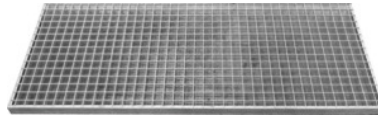


Grating, Depth: 500mm



Order data

Order number	991724 500
GTIN	2050001760821
Item class	960

Description

Version:

For laying on the cantilever arms. Hot-dip galvanised steel grid. Load capacity max. 400 kg per grid.

Can be screwed to the cantilever arms with 2 fastening lugs.

Suitable for:

Cantilever arm rack No. 991711 – 991718, individual cantilever arms No. 991720.

Supplied with:

Grating, 2 fastening lugs, 2 self-tapping screws 6×16 mm.

Technical description

Width	1250 mm
Height	30 mm
Depth	500 mm
Shelf load capacity / maximum distributed shelf load (on metal)	400 kg
Material	galvanised
Type of product	Mesh grid