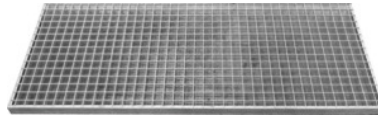


Grating, Depth: 600mm



Order data

Order number	991724 600
GTIN	2050001760838
Item class	960

Description

Version:

For laying on the cantilever arms. Hot-dip galvanised steel grid. Load capacity max. 400 kg per grid.

Can be screwed to the cantilever arms with 2 fastening lugs.

Suitable for:

Cantilever arm rack No. 991711 – 991718, individual cantilever arms No. 991720.

Supplied with:

Grating, 2 fastening lugs, 2 self-tapping screws 6×16 mm.

Technical description

Height	30 mm
Depth	600 mm
Width	1250 mm
Shelf load capacity / maximum distributed shelf load (on metal)	400 kg
Material	galvanised
Type of product	Mesh grid